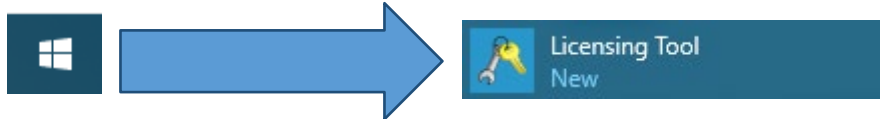


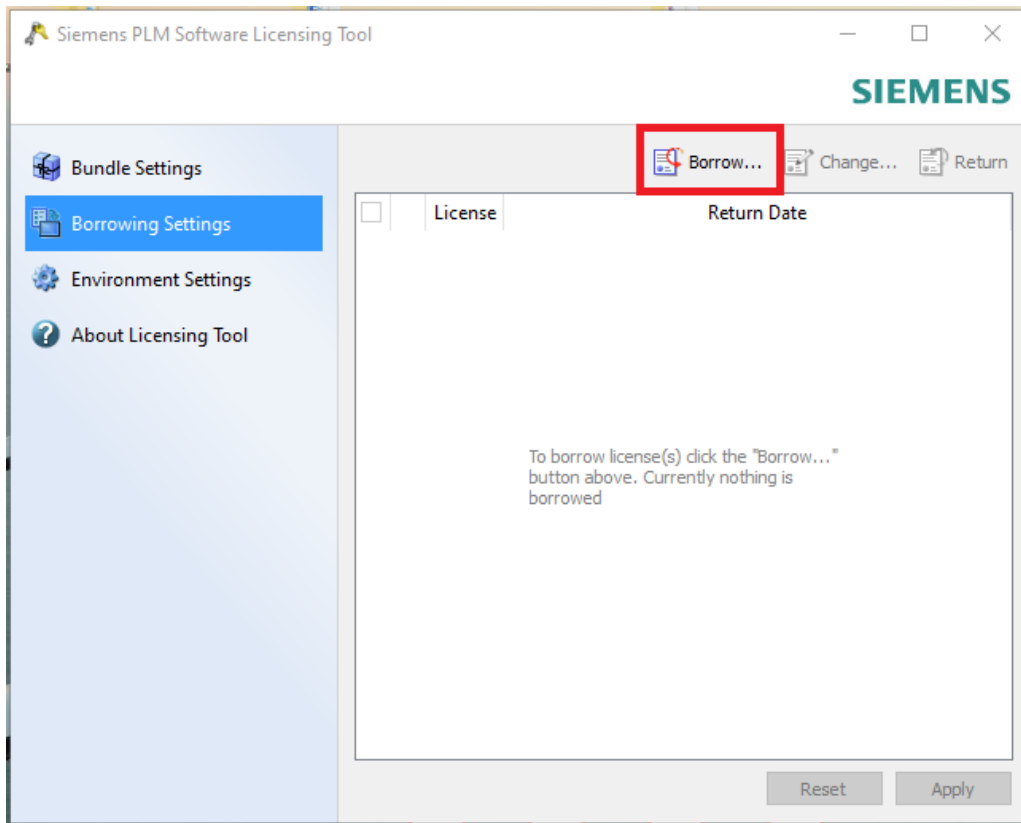
## License Borrowing Guide for “NX Floating License”

If you are running VPN, then borrowing will not be required. You are already on the network. BUT, if you plan to work from home, then borrowing will be needed.

**Step 1:** Open the **Start Menu** and locate **Licensing Tool** under **Siemens NX 12.0**.

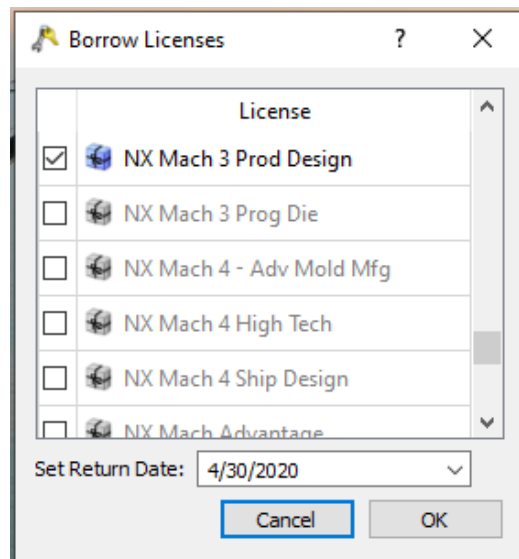


**Step 2:** Under the **Borrowing Settings** tab, click **Borrow....**

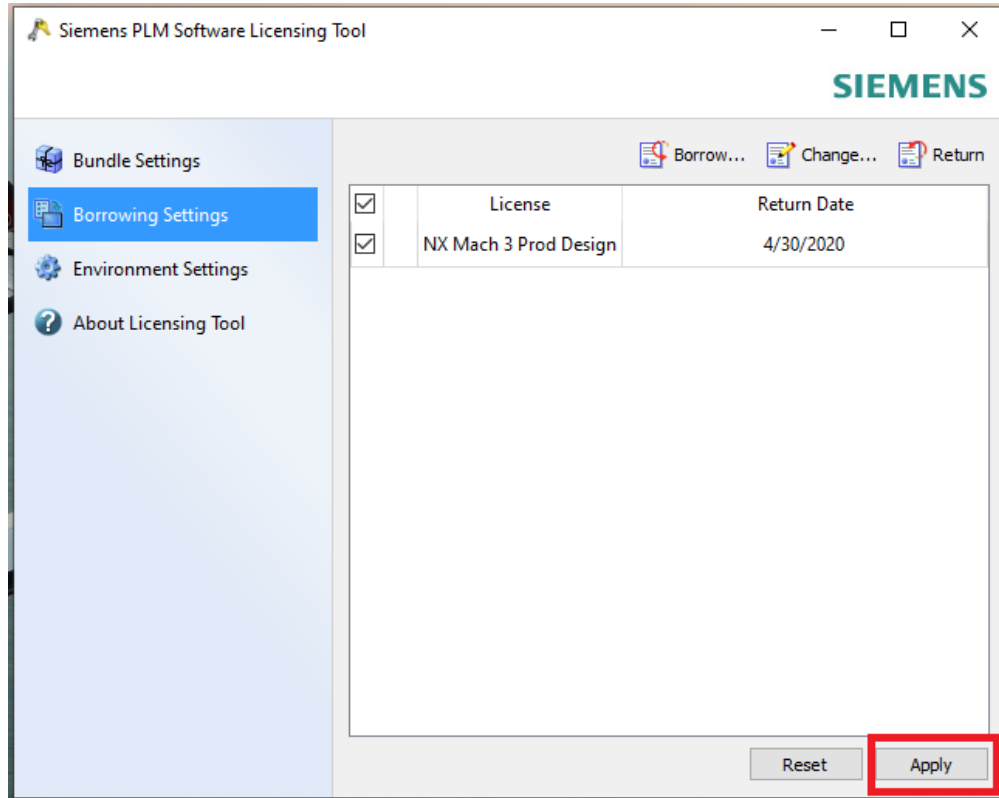


**Step 3:** Select the license that you want to borrow, in this example, we will select **NX Mach 3 Prod Design**. Then click **OK**.

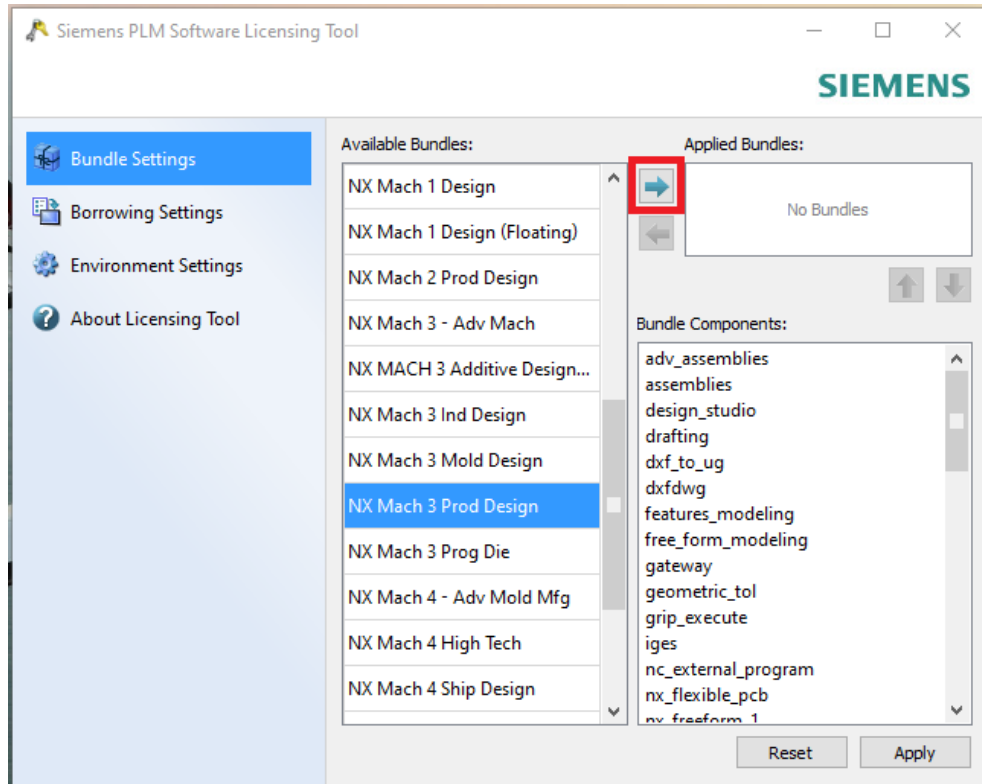
**Note:** Licenses are limited to a **90-day** maximum borrow period. You can re-borrow the license for an additional 90 days by returning to campus and repeating these steps.

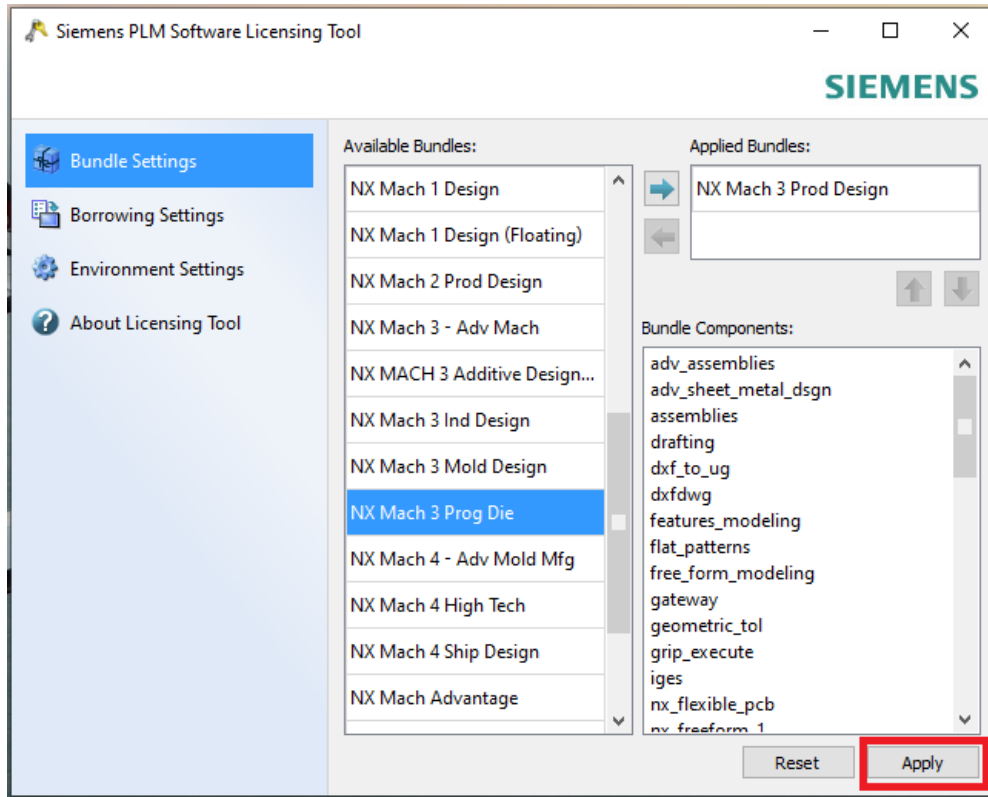


**Step 4:** Click **Apply** to borrow the licenses. Note that it may take a few minutes for this process to finish.



**Step 5:** Under the **Bundle Settings** tab select both the **NX Mach 3 Prod Design** bundles and click the arrow to move the bundles to the **Applied Bundle** section.





**Step 6:** License borrowing complete. You should now be able to use NX while off your company’s internal network for the duration of the borrowed license period.

**Step 7:** Don’t forget to return your borrowed license when you no longer need it.