

Borrowing Setup for Femap 2020.1

Before you begin:

If you were previously using borrowing then make sure all borrowed licenses have been returned before upgrading the license server or license file.

Server setup:

- 1) You MUST be using the latest version of the licensing binaries. Femap 2020.1 uses FlexNET v11.16.1. This can be installed from the from the Femap Installation media at `\FEMAPv20201_ML\network\win64\`
- 2) You must have a license from Siemens PLM where borrowing has been enabled (Will contain the BORROW keyword in the license string). Starting in Femap v12 all floating licenses will include borrowing.
- 3) Use lmttools.exe to setup FLEXlm the same as any normal installation by creating a new service and pointing to lmgrd, log and license file.

Client setup where Femap is installed and who will be borrowing:

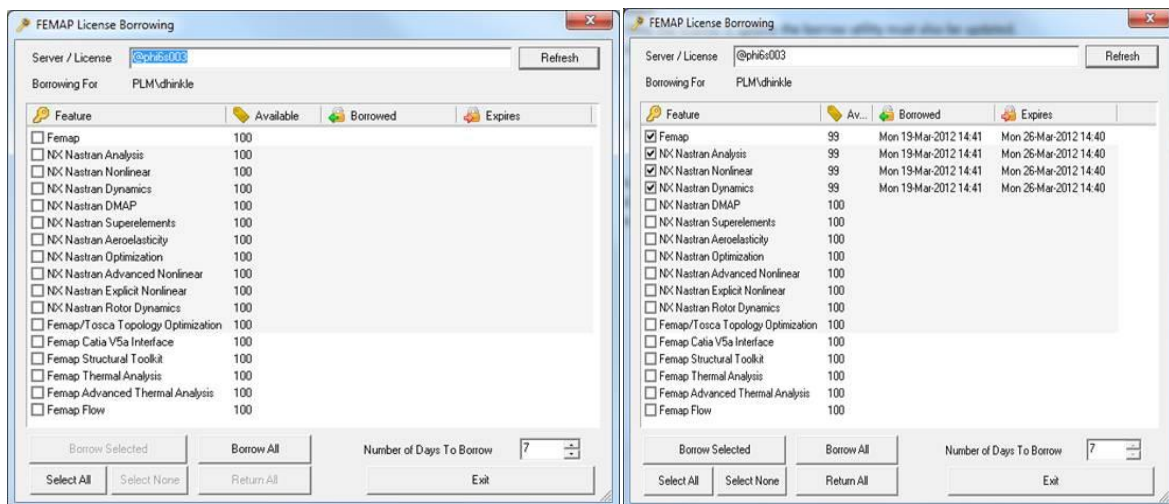
- 1) You must be using Femap 11.1.0 or later.
- 2) Go to the Femap 2020.1 installation directory and run the batch file go_network.bat

To borrow a license:

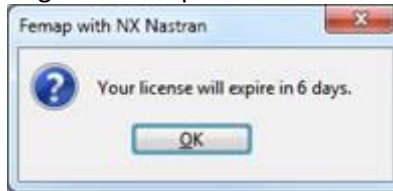
Before you begin, close any Femap sessions running on the machine where you need to borrow.

- 1) Run the Borrow.exe utility located in the Femap directory.
- 2) Enter the server where the FLEXlm is serving a 2020.1 license that has previously been enabled for borrowing by entering “@YOURSERVER”
- 3) Choose the features that you wish to borrow. (Note: All modules that you might need to run NX Nastran must also be borrowed at this time)

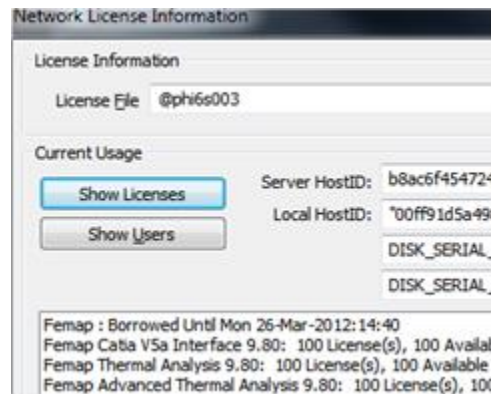
Set the Number of Days to Borrow and press the “Borrow Selected” button. Once the Features are borrowed the utility will display the borrowed state and when it expires for that machine.



When you start Femap it should automatically use the borrowed license. You will know Femap is using a borrowed license if you see this message at start up.



Borrowing data can also be seen in Femap. Use the Help, About command, click the Security button, then Security>Show Licenses.



Notes:

- Borrowing is supported in the 64-bit version of Femap 11.1.x, Femap 11.2.x, Femap 11.3.x, Femap 11.4.x, Femap 12.0.x, Femap 2019.1.x and Femap 2020.1.x only.
- When you borrow a license you are borrowing it for a specific machine and user account (NOTE: logging into a domain and logging into a machine locally are actually 2 different user accounts). When you disconnect from the network only the user account that actually borrowed the license will be able to run Femap on the borrowed license.
- At the end of the borrow period the license will automatically fail on the client and become available on the server without needing to physically reconnect to the server.
- Once a license is borrowed it can only be returned by that client that originally borrowed it. If the borrowing machine is lost or damaged, you will not be able to clear the borrowed license without intervention by Siemens PLM. NOTE: If this does occur, another way the license will clear is that the license will simply return automatically after the specified "borrow" time has expired.
- When upgrading to a new Femap license you MUST first return all borrowed licenses from the version of Femap which originally did the borrowing. Once all borrowed licenses are returned you can install the new license which has had the borrow feature enabled.
- The maximum allowable period for borrowing is 120 days.

Unrestricted