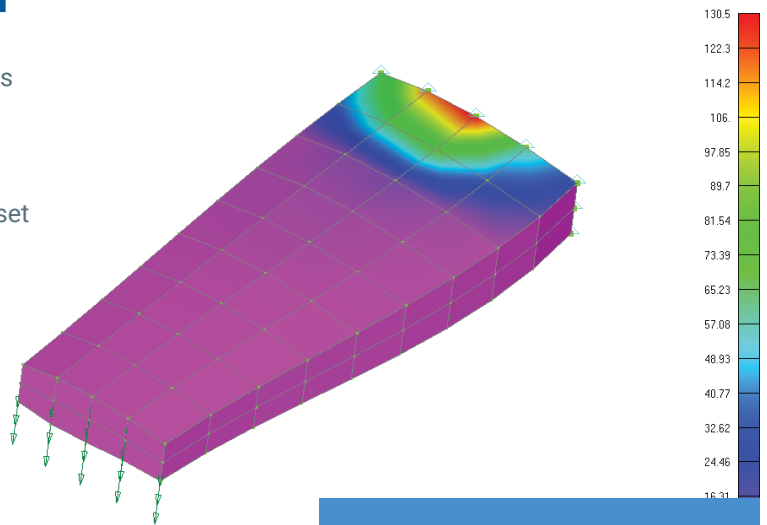


SARATECH DURAPOST

Durapost is a **utility add-on** to Simcenter Femap that allows users more easily to calculate and postprocess fatigue damage. Durapost uses Miner's Rule and the Goodman method to account for mean stress to generate an output set with fatigue damage as a percent of total fatigue life lost, using static maximum principal stresses at the element centroids from a previous analysis and user-provided S-n curve.



Durapost Advantage:

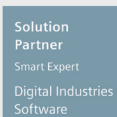
- ▶ Add-On software tool for Simcenter Femap 2020+
- ▶ Allow users to rapidly assess the fatigue life of their parts
- ▶ Use static stresses calculated by Nastran (or other solvers)
- ▶ Combine stress results with user-defined parameters to automate visualization and reporting

Software Add-on Benefits

- + Durapost reduces time to complete fatigue damage analysis by up to 50%
- + Access to Femap postprocessing tools aids visualization and reporting
- + Allows analysts to focus on analysis rather than developing tools
- + Durapost is embedded within Femap, so engineers already familiar with Femap require minimal training

Durapost Capabilities

	FEMAP	FEMAP+Durapost
Structural Analysis	X	X
Fatigue Damage Calculation (Miner's Rule)		X
Post-processing of Durability Data		X



Software Requirement:
Simcenter Femap 2020 or later

Learn more at saratech.com/durapost



Contact us today to request a free trial!

949 481 3267 | info@saratech.com | saratech.com